

## Line Up

3058

100% Vinyl (without Prop 65 Phthalates)

Upholstery


### Product Specifications

Name	Line Up
Number	3058
Product Category	Upholstery
Material Type	Coated
Content	100% Vinyl (without Prop 65 Phthalates)
Finish	Advanced Protective Topcoat
Backing	Knit, Polyester (without Antimony)
Width	54 inches (137 cm)
Weight	31.00 ounces/linear yard (961 grams/linear meter)
Average Bolt Size	30 yards
Shown Railroaded	No
Origin	Colombia
Warranty	5 years
Introduction Date	03/09/2023

### Design

Pattern Type	Stripe, Texture
Pattern Scale	Small
Repeat	V 13.00 inches x H 27.00 inches (V 33.02 cm x H 68.58 cm)
Suitable for Non-match Application	Yes

### Performance

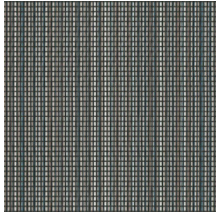
Abrasion	250,000 Wyzenbeek double rubs
Flammability	CA TB 117-2013
Lightfastness	200 hours
Performance Standards	 CFFA-Healthcare-201
Cleaning Code	Denim Dye Resistant, Water-based/Solvent (WS)
Approved Disinfectants	Bleach 10:1 CaviWipes™ Clorox Commercial Solutions® Hydrogen Peroxide Cleaner Disinfectant Clorox Healthcare® Bleach Germicidal Cleaner Clorox Healthcare® Bleach Germicidal Wipes Clorox Healthcare® Hydrogen Peroxide Cleaner Disinfectant Clorox Healthcare® Hydrogen Peroxide Cleaner Disinfectant Wipes Clorox® Multi Surface Cleaner + Bleach Clorox® Disinfecting Wipes Isopropyl Alcohol, 70% Lysol® Disinfectant Spray Lysol® Disinfecting Wipes (all scents) Oxivir® 1 Oxivir® 1 Wipes Oxivir® Five 16 Oxivir® Plus Oxivir® Tb Oxivir® Tb Wipes Perisept Rescue™

Sani-Cloth® Bleach  
Germicidal Disposable  
Wipes  
Sani-Cloth® Plus  
Germicidal Disposable  
Cloth  
Super Sani-Cloth®  
Germicidal Disposable  
Wipes  
Virex® II 256  
Virex® Plus  
Virex® Tb

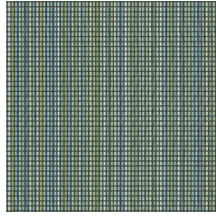
---

## Sustainability

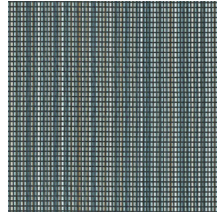
Preconsumer Recycled Content	0%
Postconsumer Recycled Content	0%
Verified Biobased Content	0%
Certifications & Programs	HPD LEED No Prop 65 Warning Required REACH UL GREENGUARD Gold WELL
Material Health	Low VOC No Antimicrobials No DMF No Flame Retardants No PFAS No Phthalates



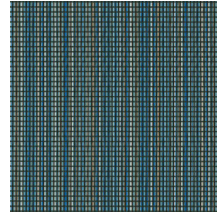
Forge  
3058-101



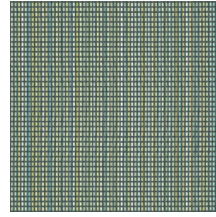
Isle  
3058-401



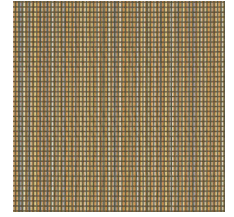
Whitewater  
3058-402



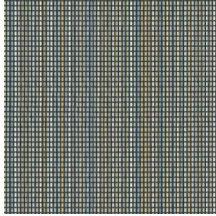
Canal  
3058-403



Sprout  
3058-501



Sunrise  
3058-701



Stone  
3058-801