

## Limn

8152

100% Polyurethane (Polycarbonate Based)

Upholstery

### Product Specifications

Name	Limn
Number	8152
Product Category	Upholstery
Material Type	Coated
Content	100% Polyurethane (Polycarbonate Based)
Finish	Advanced Protective Topcoat
Backing	Polyester, Rayon, Woven
Width	54 inches (137 cm)
Weight	18.00 ounces/linear yard (558 grams/linear meter)
Average Bolt Size	30 yards
Shown Railroaded	No
Origin	China
Warranty	5 years
Introduction Date	01/10/2025

### Design

Collection	Biophilia
Pattern Type	Allover, Organic, Texture
Pattern Scale	Small
Suitable for Non-match Application	Yes

### Performance

Abrasion	300,000 Wyzenbeek double rubs
Flammability	CA TB 117-2013
Hydrolysis	15 weeks (CFFA 110 ASTM D3690-19, Section 6.11)
Lightfastness	1000 hours
Performance Standards	 CFFA-Healthcare-201
Cleaning Code	Denim Dye Resistant, Ink Resistant, Water-based/Solvent (WS)
Approved Disinfectants	Bleach 10:1 Asepticare™ CaviWipes™ Clorox Healthcare® Bleach Germicidal Cleaner Clorox Healthcare® Bleach Germicidal Wipes Clorox Healthcare® Hydrogen Peroxide Cleaner Disinfectant Clorox Healthcare® Hydrogen Peroxide Cleaner Disinfectant Wipes Isopropyl Alcohol, 90% Lysol® Disinfectant Spray Oxivir® 1 Oxivir® 1 Wipes Oxivir® Tb Oxivir® Tb Wipes Sani-Cloth® AF3 Germicidal Disposable Wipes Sani-Cloth® Bleach Germicidal Disposable Wipes Super Sani-Cloth® Germicidal Disposable Wipes

Virex® II 256  
Wex-Cide 128

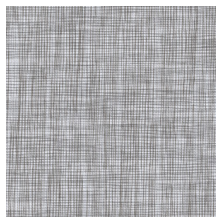
---

## Sustainability

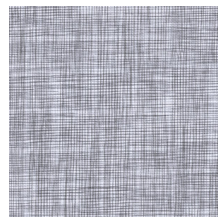
Preconsumer Recycled Content	0%
Postconsumer Recycled Content	0%
Verified Biobased Content	0%
Certifications & Programs	Healthier Hospitals HPD LEED No Prop 65 Warning Required REACH UL GREENGUARD Gold WELL
Material Health	Low VOC No Antimicrobials No DMF No Flame Retardants No PFAS No Phthalates No PVC



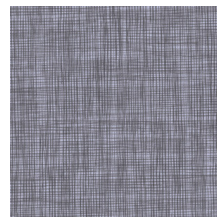
Boulder  
8152-101



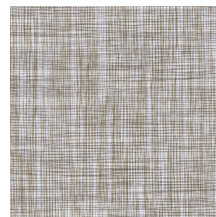
Stone  
8152-102



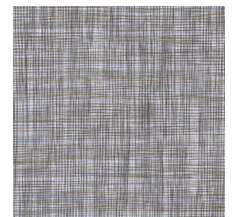
Alloy  
8152-151



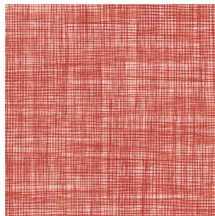
Manatee  
8152-152



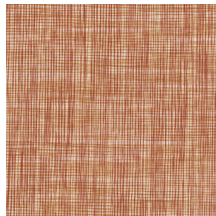
Wheat  
8152-251



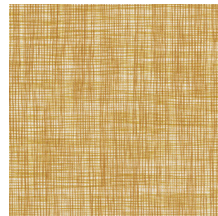
Cliff  
8152-252



Strawberry  
8152-351



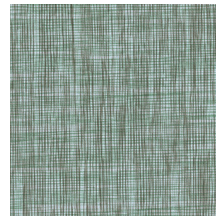
Grapefruit  
8152-401



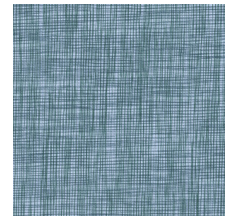
Mango  
8152-501



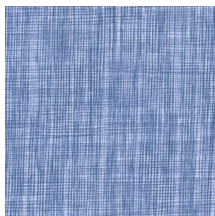
Lemongrass  
8152-601



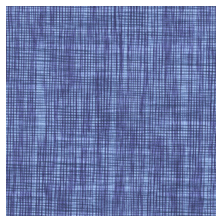
Sage  
8152-701



Hosta  
8152-702



Sail  
8152-751



Blue Ink  
8152-752