

BARREL + BARREL SLANT

Barrel Soft Seat is a cylindrical shaped upholstered foam shape with one flat side, available in 4 heights (12", 14", 16" and 18"). Cover is not removable for cleaning. Accommodates up to 300 lb. weight capacity.

Barrel Slant Soft Seat is a cylindrical shaped upholstered foam shape with one flat side and two slanted ends, available in 4 heights (12", 14", 16" and 18"). Cover is not removable for cleaning. Accommodates up to 300 lb. weight capacity.

Core Construction

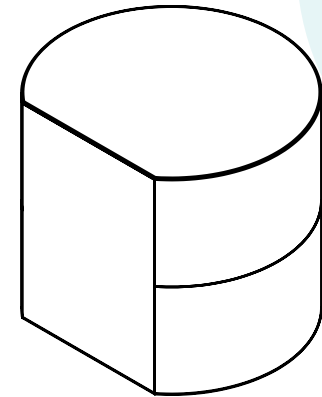
> Cylindrical shape in ILD 95, high density foam

Cover

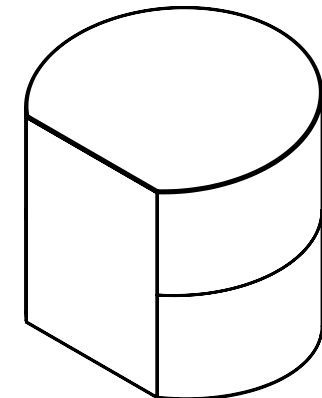
Cover may be specified in environmentally friendly wipe clean coated vinyl cap. A slip-resistant gripper vinyl can be added to the bottom cover piece.

Compliance

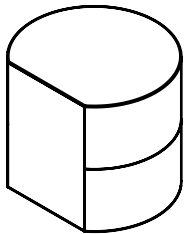
- > Meets or exceeds applicable BIFMA standards
- > Certified Indoor Advantage™ Gold. Indoor air quality certified to SCS-EC10.3-2014 V3.0. Registration #SCS-IAQ-03677



* Barrel

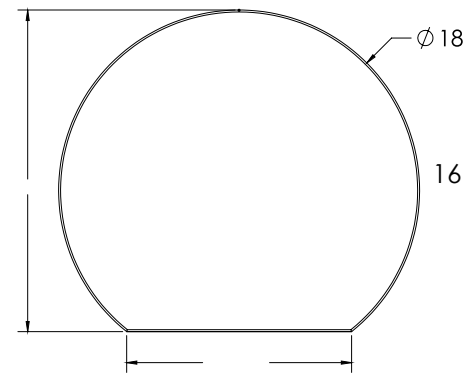


* Barrel Slant

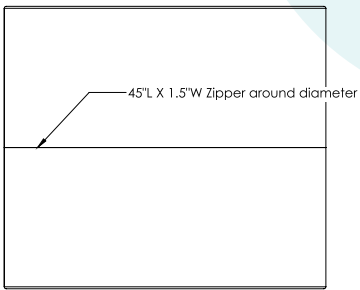
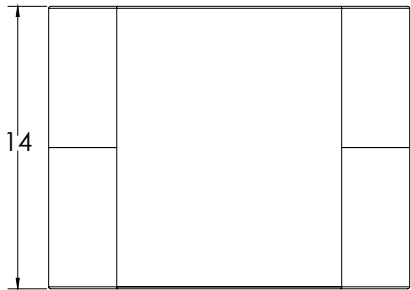
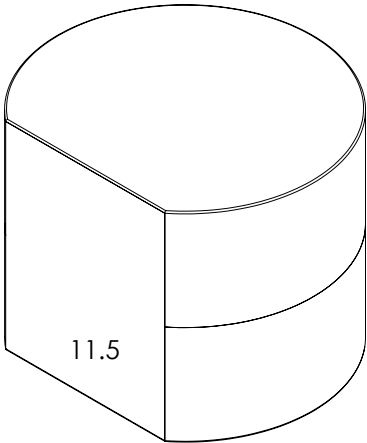


Soft Seating

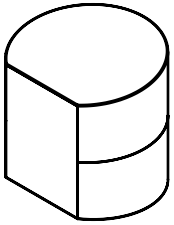
Barrel



* Model SS-BA14 shown

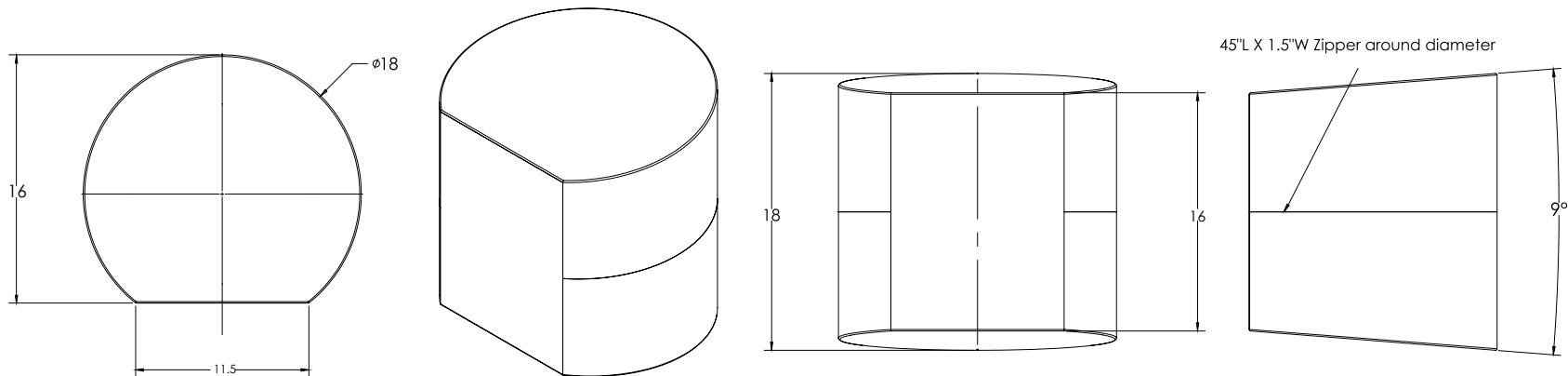


| MODEL | DIAMETER" | WIDTH" | HEIGHT" |
|----------|-----------|------------------|---------|
| SS-BA12 | 18" | 16" to flat side | 12" |
| SS-BA14 | 18" | 16" to flat side | 14" |
| SS-BA16 | 18" | 16" to flat side | 16" |
| SS-BA18 | 18" | 16" to flat side | 18" |
| SS-BAG12 | 18" | 16" to flat side | 12" |
| SS-BAG14 | 18" | 16" to flat side | 14" |
| SS-BAG16 | 18" | 16" to flat side | 16" |
| SS-BAG18 | 18" | 16" to flat side | 18" |



Soft Seating

Barrel Slant



* Model SS-BAS18 shown

| MODEL | DIAMETER" | WIDTH" | HEIGHT" |
|----------|-----------|------------------|---------|
| SS-BAS12 | 18" | 16" to flat side | 12" |
| SS-BAS14 | 18" | 16" to flat side | 14" |
| SS-BAS16 | 18" | 16" to flat side | 16" |
| SS-BAS18 | 18" | 16" to flat side | 18" |